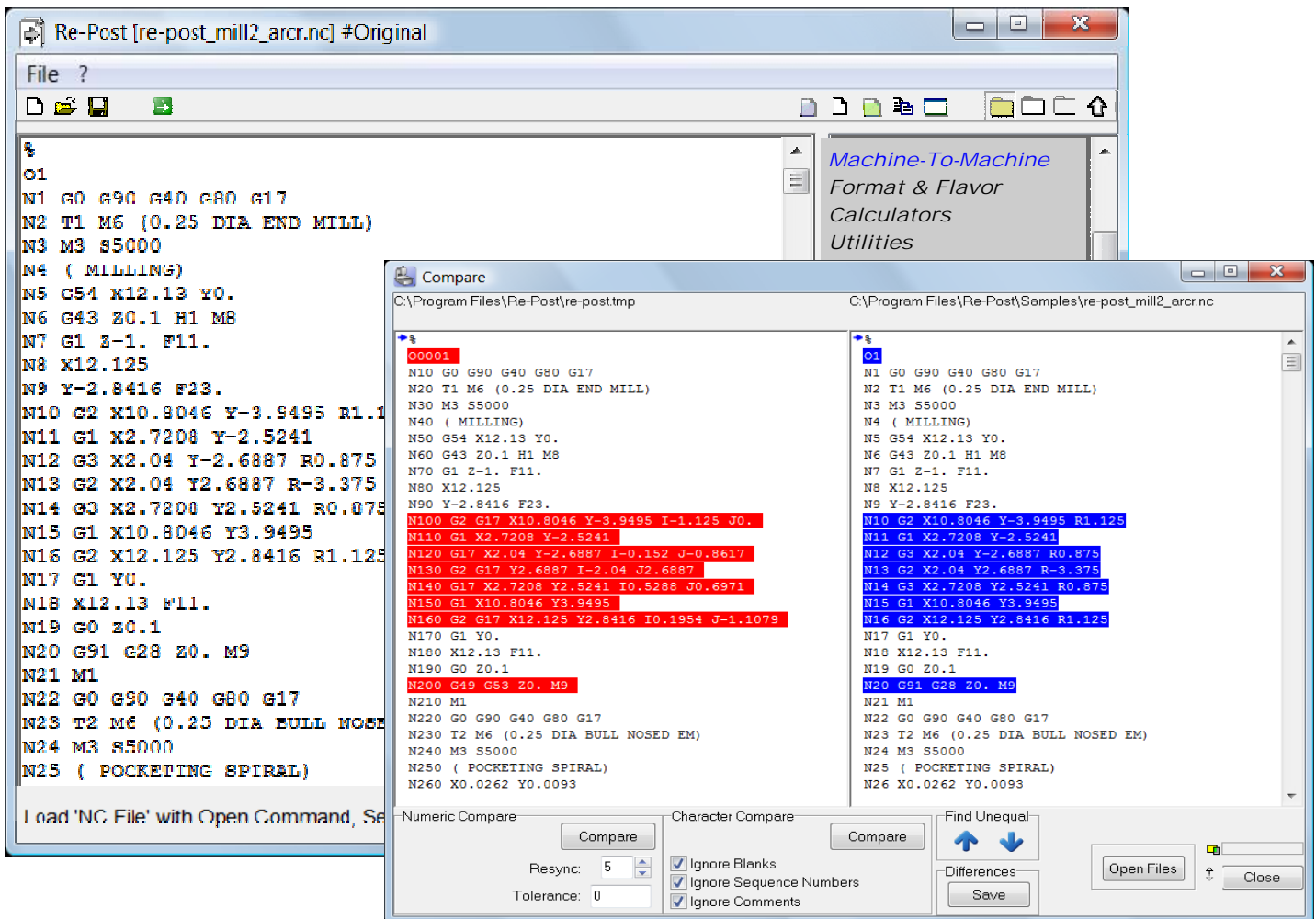


# Re-Post™

## The NC Translator

Quickly change from machine-to-machine  
Proven legacy programs can be re-used  
Multiple machines can be supported from one program  
Production changes can be adjusted on the shop floor

Independent of where NC files were originally created, **Re-Post "The NC Translator"** provides Fast and Simplified Forward and Reverse Post Processing and Flavoring of NC-Code to quickly change from machine-to-machine or satisfy any shop floor formatting needs. **Re-Post is affordable (\$995)**, user configurable & easy to use. Proven legacy programs can be re-used, multiple machines can be supported from one program, production changes can be adjusted on the shop floor, and much more.



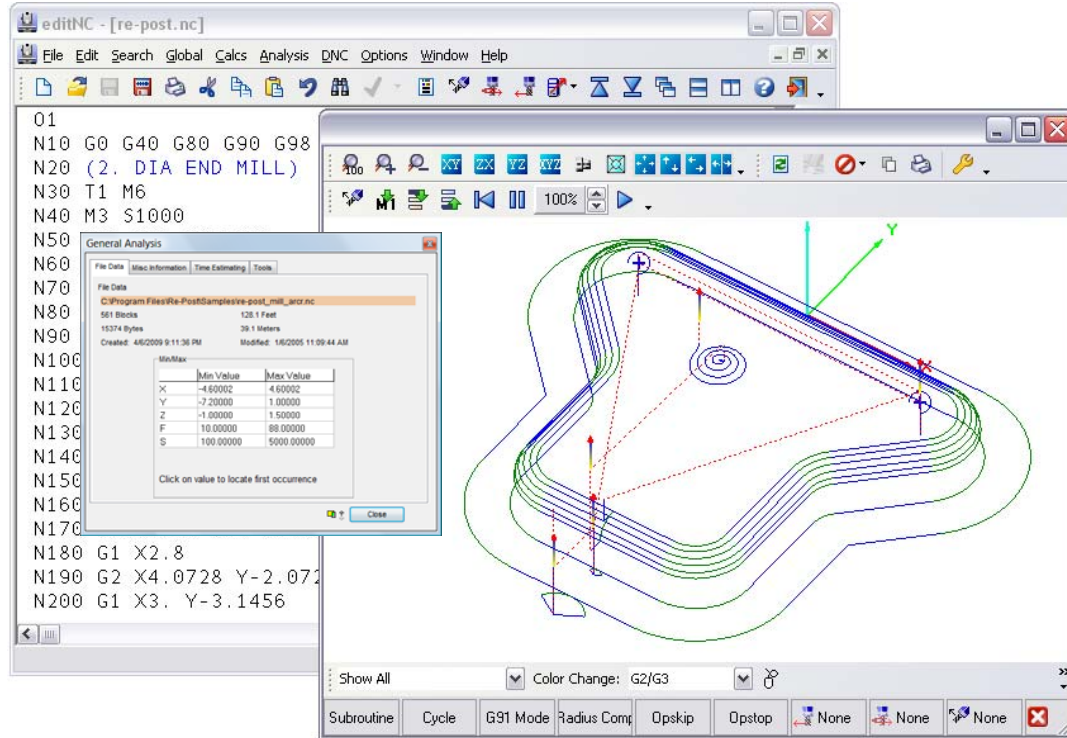
Load NC Program, Select Configuration File, Process  , Save File > Send to Machine

Re-Post "The NC Translator" provides for Forward and reverse post processing, flavoring & formatting, conversion, transformation, arc formatting, calculating, analyzing, estimating, speed & feed optimization, family of part programming, sequence number management, space management, and much more.

For more information visit us at  
[www.bairtechnologies.com](http://www.bairtechnologies.com)

**editNC™ (seamlessly integrated with Re-Post "The NC Translator") a product of NFR Partners**

The "NC Programmers Editor of Choice" provides for large files, multiple documents, file compare, text coloring, sequencing & formatting, smart searches, spaces, transformations, calculators, reference charts, analysis, dnc and nc backplotter. Edit and Review, Calculate, Analyze, Compare, Estimate, and Backplot, Communicate (DNC with Drip Feed) Auxfuns (Third Party Auxilliary Functions) - dxfout (included), G-Macro for editNC (optional \$300), Machinist ToolBox (optional \$100). Reliable (first release 1993 and thousands of users), High performance even with large files (90MB tested), Easy to use & maintain (single executable and its related help files), cost effective (**standalone \$200**), and much more.



The **optional G-Macro (+\$300)** uses macro language that is similar to that used by many CNC controls, macro incorporates graphics (bmp) for ease of use, create family of parts applications, create user defined cycles and calculators, automate repetitive functions and processes, prove out macro programs for cnc controls.

